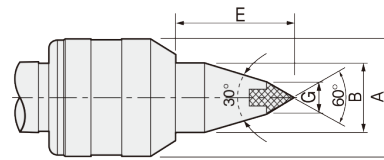
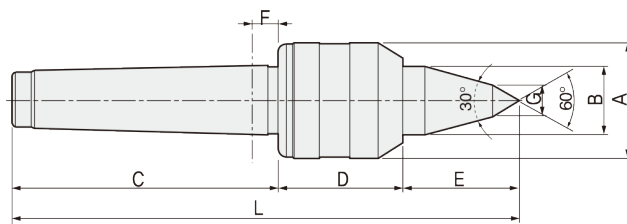


BBL30

FEATURES

- Accuracy guaranteed to 0.003 TIR (0.0001")
- Excellent for light-medium-duty work on conventional lathe machines.
- Slim diameter improve tool clearance.
- Heat-treated point to HRc 60±2.
- Rear bearing is sealed, protecting assembly from coolant and chips.
- Carbide point available.
- Carbide point to HRA 90±5



Available Carbide Tipped Points

BBL30C-TYPE

- MT3: 124003
- MT4: 124004
- MT5: 124005

Dimension

Unit: mm, kg

MODEL	MT	A	B	C	D	E	F	G	L	Workpiece Weight	Max, Axial Load	Max, R.P.M	Weight	Max, Run Out
123003 (124003)	3	44.5	22	85	44	36	5.3	12	165	320	600	5,000	1	0.003
123004 (124004)	4	44.5	22	108	44	36	5.3	12	188	320	600	5,000	1.2	0.003
123005 (124005)	5	63	28	136	58	44	6.3	14	238	400	750	4,000	3	0.003

* (MODEL NO) : Carbide Tip Type

BBL30 type Technical data

- 3,4BBL30
- 5BBL30

