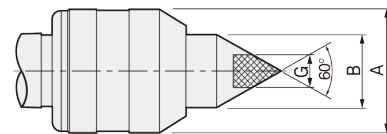
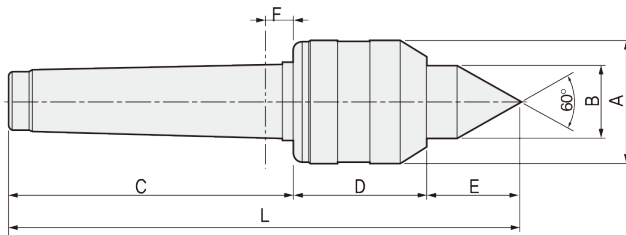


BB

FEATURES

- Accuracy guaranteed to 0.003 TIR (0.0001")
- Excellent for light-medium-duty work on conventional lathe machines.
- Slim diameter improve tool clearance.
- Heat-treated point to HRc 60±2.
- Rear bearing is sealed, protecting assembly from coolant and chips.
- Carbide point available.
- Carbide point to HRa 90±5



Available Carbide Tipped Points BBC-TYPE

- MT3: 122003
- MT4: 122004
- MT5: 122005

Dimension

Unit: mm. kg

MODEL	MT	A	B	C	D	E	F	G	L	Workpiece Weight	Max, Axial Load	Max, R.P.M	Weight	Max, Run Out
121003 (122003)	3	44.5	25	85	44	32.5	5.3	12	161.5	400	600	5,000	1	0.003
121004 (122004)	4	44.5	25	108	44	32.5	5.3	12	184.5	400	600	5,000	1.2	0.003
121005 (122005)	5	63	28	136	58	35	6.3	14	229	500	750	4,000	2.8	0.003

*(MODEL NO) : Carbide Tip Type

BB type Technical data

- 3,4BB
- 5BB

