

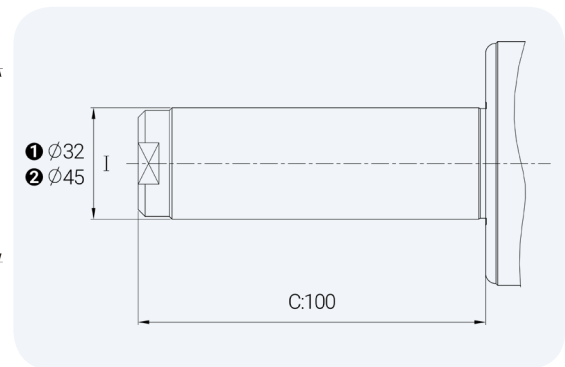
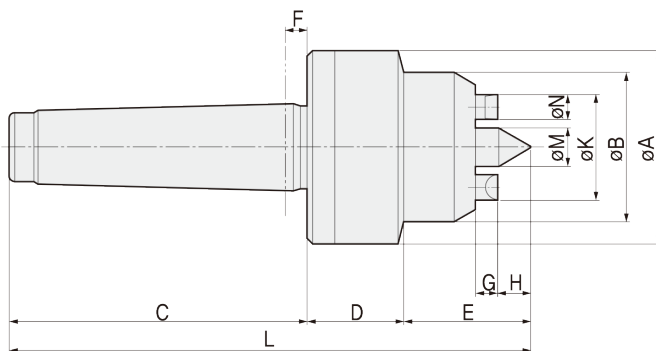
# FACE DRIVER

## FEATURES

- Accuracy guaranteed to 0.002 TIR (0.0001")
- Excellent for turning machine and gear hobbing process.
- Only single clamping is needed to entire cutting process.
- Improve productivity in mass productions as well as high precision.
- Able to use at Head stock instead of clamping chuck.
- Keep the workpiece stable with no slippage even during heavy cuts.
- Nano technology finished drive pins offer superior life time.
- Wide range clamping capability.



## Available Straight shank

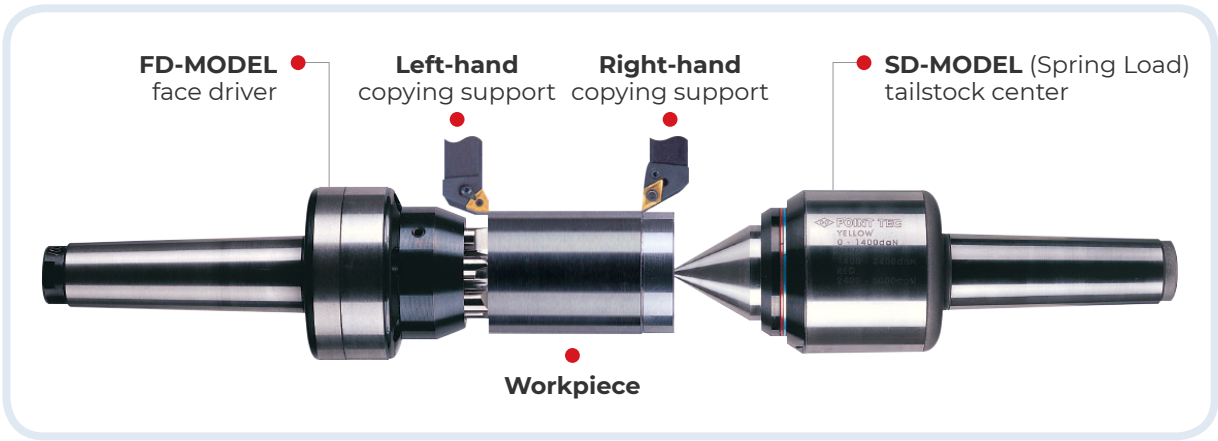


\* order example : 0909ST45 = FD32 with straight shank ø45

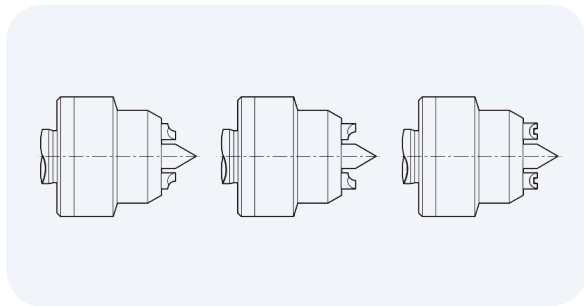
## Dimension

Unit: mm. kg

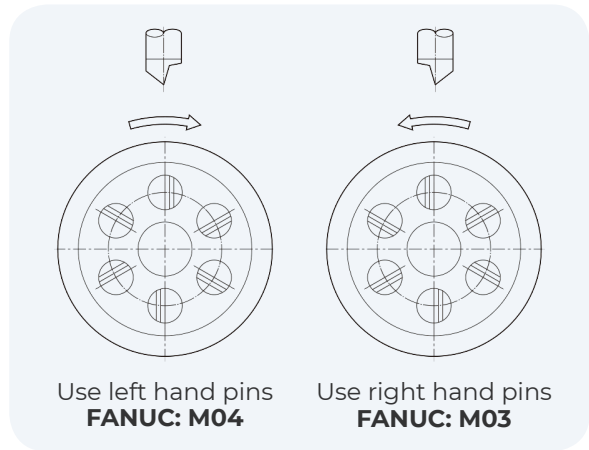
MODEL	MODEL NO.	MT	A	B	C	D	E	F	G	H	L	K	M	N	Number of driving pins	Work size	Workpiece Weight	Weight	Max Run Out
FD31	090803	3	42	30	89	24.5	30.8	6	5	4.3	144.3	17	5	5	4	ø19~ø34	50	0.8	0.02
	090804	4	42	30	108	24.5	30.8	8	5	4.3	163.3	17	5	5	4	ø19~ø34	50	1.0	0.02
	090805	5	42	30	136	24.5	30.8	8	5	4.3	191.3	17	5	5	4	ø19~ø34	50	1.5	0.02
FD32	090903	3	52	40	89	26.5	35.8	6	6.5	7.8	151.3	26	9	7	5	ø28~ø50	55	1.0	0.02
	090904	4	52	40	108	26.5	35.8	8	6.5	7.8	170.3	26	9	7	5	ø28~ø50	55	1.2	0.02
	090905	5	52	40	136	26.5	35.8	8	6.5	7.8	198.3	26	9	7	5	ø28~ø50	55	2.0	0.02
FD33	091003	3	70	54	89	36	45	6	9	11	170	38	14	9	6	ø40~ø72	65	1.2	0.02
	091004	4	70	54	108	36	45	8	9	11	189	38	14	9	6	ø40~ø72	65	2.0	0.02
	091005	5	70	54	136	36	45	8	9	11	217	38	14	9	6	ø40~ø72	65	2.9	0.02
FD34	091104	4	82	72	108	40	56.1	8	11	14.1	204.1	54	20	14	6	ø55~ø100	100	3.1	0.02
	091105	5	82	72	136	40	56.1	8	11	14.1	232.1	54	20	14	6	ø55~ø100	100	3.9	0.02



**Special drive pin styles**

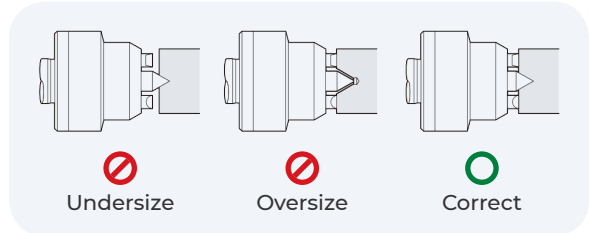


**Driving pins direction of rotation**

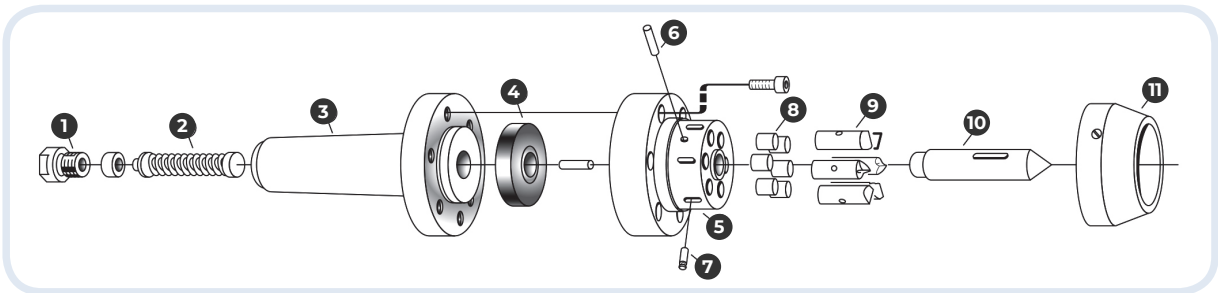


**Center hole size**

NO	MODEL	CENTER HOLE DIA. LIMITS			
		MIN( $\phi$ )		MAX( $\phi$ )	
		inch	mm	inch	mm
1	FD31	0.08	2	0.16	4
2	FD32	0.16	4	0.31	8
3	FD33	0.16	6	0.47	12
4	FD34	0.31	8	0.63	16



**The construction of face driver**



1 End cover 2 Spring rod 3 Shank 4 SP urethane 5 Head 6 Pin At Point 7 Pin At Pin 8 Roller 9 Drive pin 10 Center Point 11 Cover

**FD Sparepart**

PART NO.	PART NAME	FD31	FD32	FD33	FD34
4	SP urethane	90816	90916	91016	91116
6	Pin-At-Point	90821	90921	91021	91121
7	Pin-At-Pin	90822	90922	91022	91122
8	Roller	90817	90917	91017	91117

PART NO.	PART NAME	FD31	FD32	FD33	FD34
9	Drive pin	90812	90912	91012	91112
10	Center point	90814	90914	91014	91114
11	Cover	90823	90923	91023	91123

