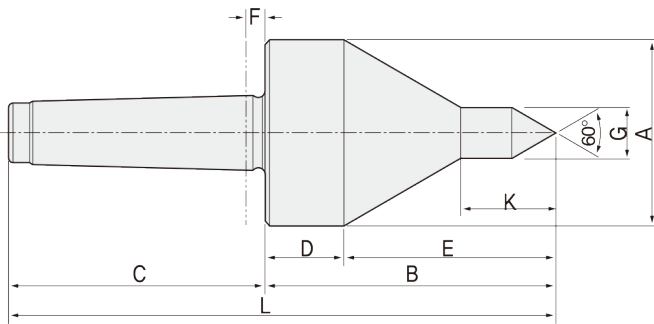


BP60A

FEATURES

- Accuracy guaranteed to 0.003mm TIR (0.0001")
- Excellent for pipe work, tube work and parts with extra-large center holes.
- Heat-treated point to HRc 60 ± 2.
- Used both as a centering taper for hollow bodies and as a center for machining standard workpiece.



Dimension

Unit: mm, kg

MODEL	MT	A	B	C	D	E	F	G	K	L	Workpiece Weight	Max, R.P.M	Weight	Max, Run Out
085002	2	44	79	68	32.3	46.7	6	12	19	147	320	5,000	1	0.003
085003	3	56	86	85	28.9	57.1	6	12	19	171	320	5,000	1	0.003
085004	4	78	103.5	108	26.3	77.2	8	16	23.5	211.5	560	3,800	2.3	0.003
085005	5	98	140	136	41.6	98.4	8	19	30	276	1,200	3,000	5	0.003
085006	6	118	165	189	44.3	120.7	10	19	35	354	2,000	2,500	10	0.005

BP60A type Technical data

- 2,3BP60A
- 4BP60A
- 5BP60A
- 6BP60A

