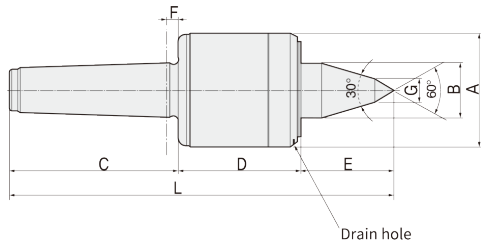


# BHSL30

- Accuracy guaranteed to 0.002mm TIR (0.0001")
- Excellent for CNC, grinder and high precision high speed machining.
- Shaft extension type; improve tool clearance and machining flexibility.
- High RPM (Up to 12,000)
- Heat-treated point to HRc 60 ± 2.
- Drain hole have to be located on bottom side.
- Labyrinth seal for coolant deflectors and super high speed.
- Heat-treated body for extra strength, rigidity and long life.
- Carbide point available.
- Carbide point to HRa 90 ± 5.



**Available Carbide Tipped Points**  
**BHSL30C-TYPE**

- MT2: 044002
- MT3: 044003
- MT4: 044004
- MT5: 044005

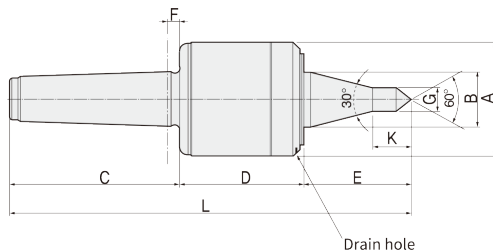
Unit: mm. kg

MODEL	MT	A	B	C	D	E	F	G	L	Workpiece Weight	Max. R.P.M	Weight	Max. Run Out
043002 (044002)	2	50	20	68	54	38	4	10	160	280	15,000	1.8	0.002
043003 (044003)	3	50	20	85	54	35	4.5	12	174	280	15,000	1.8	0.002
043004 (044004)	4	70	30	108	75	53	5.3	14	236	450	12,000	2.2	0.002
043005 (044005)	5	70	30	136	75	53	6.3	18	264	450	12,000	5.2	0.002

\* (MODEL NO) : Carbide Tip Type

# BHSL30A

- Accuracy guaranteed to 0.002mm TIR (0.0001")
- Excellent for CNC, grinder and high precision high speed machining.
- Shaft extension type; improve tool clearance and machining flexibility.
- High RPM (Up to 12,000)
- Heat-treated point to HRc 60
- Drain hole have to be located on bottom side.
- Labyrinth seal for coolant deflectors and super high speed.
- Heat-treated body for extra strength, rigidity and long life.
- Carbide point available.
- Carbide point to HRa 90 ± 5.



**Available Carbide Tipped Points**  
**BHSL30AC-TYPE**

- MT2: 046002
- MT3: 046003
- MT4: 046004
- MT5: 046005

Unit: mm. kg

MODEL	MT	A	B	C	D	E	F	G	K	L	Workpiece Weight	Max. R.P.M	Weight	Max. Run Out
045002 (046002)	2	50	20	68	54	45	4	10	19	167	250	15,000	1.8	0.002
045003 (046003)	3	50	20	85	54	45	4.5	10	19	184	250	15,000	1.8	0.002
045004 (046004)	4	70	30	108	75	63.5	5.3	12.5	23.5	246.5	390	12,000	2.2	0.002
045005 (046005)	5	70	30	136	75	70	6.3	12.5	23.5	281	390	12,000	5.2	0.002

\* (MODEL NO) : Carbide Tip Type