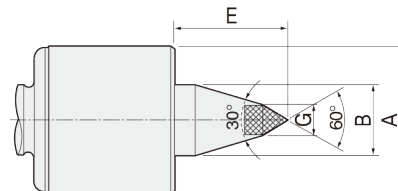
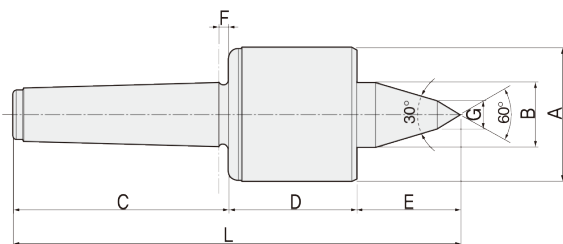


# BSL30

## FEATURES

- Accuracy guaranteed to 0.002mm TIR (0.0001")
- Excellent for CNC, grinder and high speed light-duty machining.
- Shaft extension type; improve tool clearance and machining flexibility.
- High RPM (Up to 6,000)
- Heat-treated point to HRc 60
- Based on double angular contact bearings for superior performance.
- Anti-friction seal for coolant deflectors and high speed.
- Heat-treated body for extra strength, rigidity and long life.
- Carbide point available.
- Carbide point to HRA 90 ± 5.



### Available Carbide Tipped Points BSL30C-TYPE

- MT3: 164003
- MT4: 164004
- MT5: 164005

## Dimension

Unit: mm. kg

MODEL	MT	A	B	C	D	E	F	G	L	Workpiece Weight	Max, R.P.M	Weight	Max, Run Out
163003 (164003)	3	50	20	85	58	31	4.5	10	174	600	6,000	1.9	0.002
163004 (164004)	4	66	31	107	71	51	5.3	14	229	1,100	6,000	2.4	0.002
163005 (164005)	5	80	35	136	78	53	6.3	18	267	2,000	5,000	5.3	0.002

\* (MODEL NO) : Carbide Tip Type

## BSL30 type Technical data

- 3BSL30
- 4BSL30
- 5BSL30

