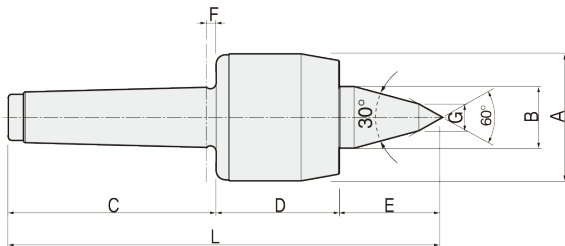


HIGH SPEED PREMIUM LIVE CENTER : Extended 30° Type



# BNHL30

- Accuracy guaranteed to 0.002mm TIR (0.0001")
- Excellent for CNC, grinder and high speed precision machining.
- Shaft extension type; improve tool clearance and machining flexibility.
- High RPM (Up to 6,000)
- Heat-treated point to HRc 60 ± 2
- Based on roller bearings for superior performance.
- Anti-friction seal for coolant deflectors and high speed.
- Heat-treated body for extra strength, rigidity and long life.
- Carbide point available.
- Carbide point to HRa 90 ± 5.



Available Carbide Tipped Points  
**BNHL30C-TYPE**

- MT3: 034003
- MT4: 034004
- MT5: 034005

Unit: mm, kg

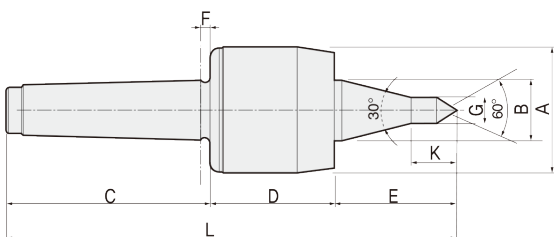
MODEL	MT	A	B	C	D	E	F	G	L	Workpiece Weight	Max, R.P.M	Weight	Max, Run Out
033003 (034003)	3	50	22	85	51.5	35	4.5	12	171.5	600	6,000	1.9	0.002
033004 (034004)	4	66	32	108	64	53	5.3	14	225	1,100	6,000	2.2	0.002
033005 (034005)	5	80	40	136	70	65	6.3	16	271	2,000	5,000	5.2	0.002

\*(MODEL NO) : Carbide Tip Type

HIGH SPEED PREMIUM LIVE CENTER : Extended A Type

# BNHL30A

- Accuracy guaranteed to 0.002mm TIR (0.0001")
- Excellent for CNC, grinder and high speed precision machining.
- Shaft extension type; improve tool clearance and machining flexibility.
- High RPM (Up to 6,000)
- Heat-treated point to HRc 60 ± 2
- Based on roller bearings for superior performance.
- Anti-friction seal for coolant deflectors and high speed.
- Heat-treated body for extra strength, rigidity and long life.
- Carbide point available.
- Carbide point to HRa 90 ± 5.



Available Carbide Tipped Points  
**BNHL30AC-TYPE**

- MT3: 036003
- MT4: 036004
- MT5: 036005

Unit: mm, kg

MODEL	MT	A	B	C	D	E	F	G	K	L	Workpiece Weight	Max, R.P.M	Weight	Max, Run Out
035003 (036003)	3	50	22	85	51.5	50	4.5	10	19	186.5	500	6,000	1.9	0.002
035004 (036004)	4	66	32	108	64	63.5	5.3	12.5	23.5	235.5	900	6,000	2.2	0.002
035005 (036005)	5	80	40	136	70	80	6.3	12.5	23.5	286	1,700	5,000	5.2	0.002

\*(MODEL NO) : Carbide Tip Type