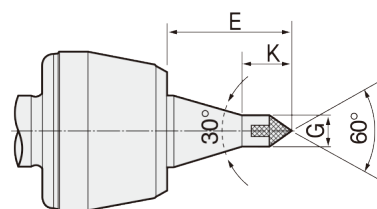
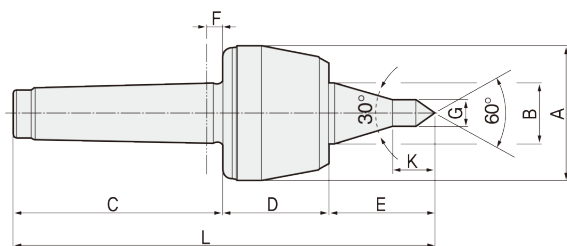


BNL30A

FEATURES

- Accuracy guaranteed to 0.003mm TIR (0.0001")
- Excellent for CNC and conventional machines.
- Shaft extension type; improve tool clearance and machining flexibility.
- Heat-treated point to HRc 60 ± 2.
- High performance lip seal and deflected shaft design protects bearing space (Double Angular Contact Bearing) from ingress by dust and coolant.
- Heat-treated body for extra strength, rigidity and long life.
- Carbide point available.
- Carbide point to HRa 90 ± 5.



Available Carbide Tipped Points

BNL30AC-TYPE

- MT2: 016002
- MT3: 016003
- MT4: 016004
- MT5: 016005
- MT6: 016006

Dimension

Unit: mm, kg

| MODEL | MT | A | B | C | D | E | F | G | K | L | Workpiece Weight | Max, R.P.M | Weight | Max, Run Out |
|--------------------|----|-----|----|-----|------|------|----|------|------|-------|------------------|------------|--------|--------------|
| 015002 (016002) | 2 | 50 | 25 | 68 | 43.5 | 50 | 6 | 10 | 19 | 161.5 | 500 | 5,000 | 0.7 | 0.003 |
| 015003 (016003) | 3 | 50 | 25 | 85 | 43.5 | 50 | 6 | 10 | 19 | 178.5 | 500 | 5,000 | 0.8 | 0.003 |
| 015004 (016004) | 4 | 69 | 32 | 108 | 55 | 63.5 | 8 | 12.5 | 23.5 | 226.5 | 550 | 3,800 | 1.9 | 0.003 |
| 015005 (016005) | 5 | 88 | 40 | 136 | 70 | 80 | 8 | 12.5 | 23.5 | 286 | 1,500 | 3,000 | 4.4 | 0.003 |
| 015006 (016006) | 6 | 105 | 50 | 189 | 81.5 | 105 | 10 | 14 | 30 | 375.5 | 2,500 | 2,800 | 8.7 | 0.005 |

*(MODEL NO) : Carbide Tip Type

BNL30A type Technical data

- 2,3BNL30A
- 4BNL30A
- 5BNL30A
- 6BNL30A

